



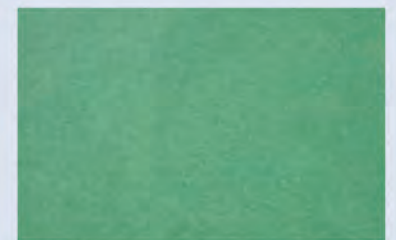
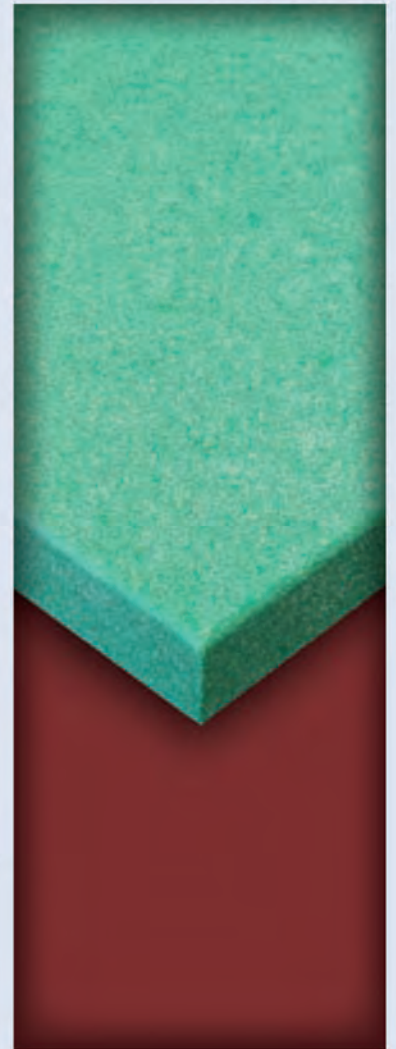
DENSETEC® SHIELD



Borated Polyethylene Sheet

APPLICATIONS

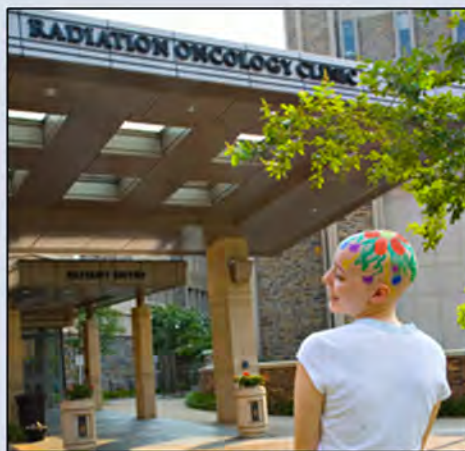
- | | |
|--------------------------------|------------------------------|
| MRI Rooms | X-Ray Rooms |
| Nuclear Submarines | Imaging Machines |
| Containment Cabinets | Containment Boxes |
| Cancer Treatment Facilities | Nuclear Power Plants |
| Nuclear or Radiation Shielding | Linear Particle Accelerators |



Planed Finish



DENSETEC®
SHIELD



FEATURES

- Lower cost than lead
- Lighter weight than lead
- Replaces lead in nuclear shielding applications
- Standard is 5% boron by weight - HDPE base material
- Can be certified to Mil-P-23536 A Type B (1/2%, 1% or 2% boron by weight)
- Mil-P-23536 certified material is inspected per Mil-I-45208 A

COLORS

Green

SIZES

Compression Molded
inch / mm

Thickness	0.5 - 4 / 12.7 - 100
Sheet Size	48 x 96 / 1220 x 2440 48 x 120 / 1220 x 3050

FINISH

Planed Finish

Note: Other sizes, colors and boron formulations available upon request

Distributed by:



POLYMER INDUSTRIES

Headquarters:

PO Box 32; 10526 AL Hwy 40
Henagar, AL 35978 USA
Ph: (256) 657-5197
Fax: (256) 657-5189
Toll Free: 1-877-POLYMER (765-9637)

Mechanical Division: Pisgah, AL
Ultrapoly Division: Tacoma, WA
Midwest Distribution: Bolingbrook, IL
West Coast Distribution: Salt Lake City, UT
Avalanche Liner Division: Oxford, WI