



DENSETEC® POST INDUSTRIAL



Image(s) supplied by TruckVault

Reprocessed Post Industrial High Density Polyethylene Sheet – PE 300

APPLICATIONS

Furniture

Boat Seats

Flooring Substructure

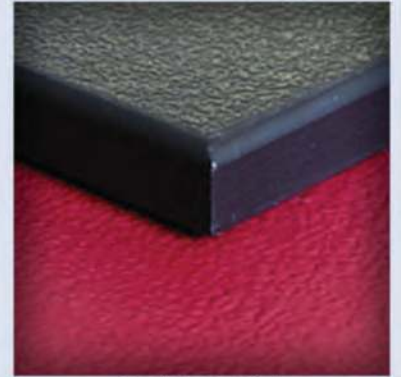
Replacement of Plywood

Drawers

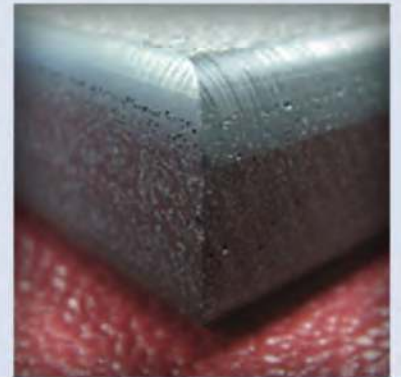
Golf Cart Seats

Non Aesthetic Applications

Applications Where Weight is an Issue



Post Industrial



Post Industrial LW



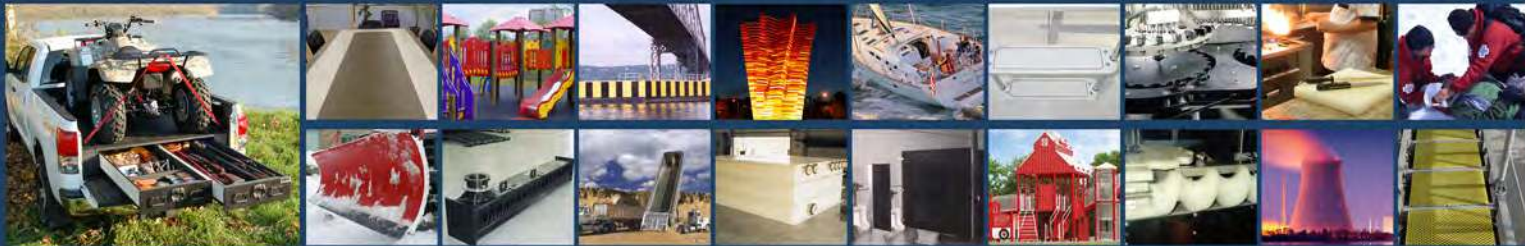
Orange Peel Finish



Recycle Logo Finish



Smooth Finish



DENSETEC® POST INDUSTRIAL



Image(s) supplied by TruckVault

FEATURES

- Does not crack
- Does not splinter
- Does not delaminate
- Does not absorb water
- RoHS & REACH compliant
- DENSETEC POST INDUSTRIAL LW available featuring 20% less weight than standard HDPE

COLORS

Black Only

SIZES

STANDARD:	Post Industrial <u>Extruded</u> inch / mm	Post Industrial LW <u>Extruded</u> inch / mm
Thickness	0.125 - 1.5 / 3 - 38	0.375 - 1 / 9.5 - 25
Sheet Size	48 x 96 / 1220 x 2440 48 x 120 / 1220 x 3050 60 x 120 / 1525 x 3050	48 x 96 / 1220 x 2440 48 x 120 / 1220 x 3050 60 x 120 / 1525 x 3050
CAPABILITIES:	<u>Extruded</u> inch / mm	<u>Extruded</u> inch / mm
Thickness	0.125 - 1.5 / 3 - 38	0.375 - 1 / 9.5 - 25
Width	45 - 144 / 1140 - 3655	45 - 60 / 1140 - 1524
Length	Up to 480 / 12200	Up to 192 / 4875

FINISH

- Orange Peel
- Recycle Logo
- Smooth

Note: Other sizes available upon request

Distributed by:



POLYMER INDUSTRIES

Headquarters:

PO Box 32; 10526 AL Hwy 40
Henagar, AL 35978 USA
Ph: (256) 657-5197
Fax: (256) 657-5189
Toll Free: 1-877-POLYMER (765-9637)

Mechanical Division: Pisgah, AL
Ultrapoly Division: Tacoma, WA
Midwest Distribution: Bolingbrook, IL
West Coast Distribution: Salt Lake City, UT
Avalanche Liner Division: Oxford, WI