



DEPARTMENT OF REGULATORY AND ECONOMIC RESOURCES  
BOARD AND CODE ADMINISTRATION DIVISION

MIAMI-DADE COUNTY  
PRODUCT CONTROL SECTION  
11805 SW 26 Street, Room 208  
Miami, Florida 33175-2474  
T (786) 315-2590 F (786) 315-2599  
[www.miamidade.gov/economy](http://www.miamidade.gov/economy)

**NOTICE OF ACCEPTANCE (NOA)**

**Transparent Protection Systems, Inc.**  
25 Wann Circle Road  
Pisgah, AL 35765

**SCOPE:**

This NOA is being issued under the applicable rules and regulations governing the use of construction materials. The documentation submitted has been reviewed and accepted by Miami-Dade County RER-Product Control Section to be used in Miami Dade County and other areas where allowed by the Authority Having Jurisdiction (AHJ).

This NOA shall not be valid after the expiration date stated below. The Miami-Dade County Product Control Section (In Miami Dade County) and/or the AHJ (in areas other than Miami Dade County) reserve the right to have this product or material tested for quality assurance purposes. If this product or material fails to perform in the accepted manner, the manufacturer will incur the expense of such testing and the AHJ may immediately revoke, modify, or suspend the use of such product or material within their jurisdiction. RER reserves the right to revoke this acceptance if it is determined by Miami-Dade County Product Control Section that this product or material fails to meet the requirements of the applicable building code.

This product is approved as described herein and has been designed to comply with the High Velocity Hurricane Zone of the Florida Building Code.

**DESCRIPTION: Clear Polycarbonate Storm Panel Shutter**

**APPROVAL DOCUMENT:** Drawing No. 20-30221, titled "Clearguard Polycarbonate Storm Panels ", sheets 1 through 5 of 5, prepared by Engineering Express, dated December 12, 2011, last revision dated October 19, 2020, signed and sealed by Frank L. Bennardo, P.E., bearing the Miami-Dade County Product Control Revision stamp with the Notice of Acceptance number and expiration date by the Miami-Dade County Product Control Section.

**MISSILE IMPACT RATING: Large and Small Missile Impact Resistant**

**LABELING:** Each panel shall bear a permanent label with the manufacturer's name or logo, city, state, the following statement: "Miami-Dade County Product Control Approved", and NOA number, per TAS-201, TAS-202, and TAS-203, unless otherwise noted herein.

**RENEWAL** of this NOA shall be considered after a renewal application has been filed and there has been no change in the applicable building code negatively affecting the performance of this product.

**TERMINATION** of this NOA will occur after the expiration date or if there has been a revision or change in the materials, use, and/or manufacture of the product or process. Misuse of this NOA as an endorsement of any product, for sales, advertising or any other purposes shall automatically terminate this NOA. Failure to comply with any section of this NOA shall be cause for termination and removal of NOA.

**ADVERTISEMENT:** The NOA number preceded by the words Miami-Dade County, Florida, and followed by the expiration date may be displayed in advertising literature. If any portion of the NOA is displayed, then it shall be done in its entirety.

**INSPECTION:** A copy of this entire NOA shall be provided to the user by the manufacturer or its distributors and shall be available for inspection at the job site at the request of the Building Official.

This NOA revises & renews NOA #14-0826.03 and consists of this page 1, evidence submitted pages E-1, E-2, E-3, & E-4 as well as approval document mentioned above.

The submitted documentation was reviewed by **Helmy A. Makar, P.E., M.S.**



*Helmy A. Makar*  
05/20/2021

NOA No. 21-0112.02  
Expiration Date: 01/21/2026  
Approval Date: 05/20/2021  
Page 1

**Transparent Protection Systems, Inc.**

**NOTICE OF ACCEPTANCE: EVIDENCE SUBMITTED**

**1. EVIDENCE SUBMITTED UNDER PREVIOUS APPROVAL # 00-0524.14**

**A. DRAWINGS**

1. *Drawing No. 00-246, titled " Clear Polycarbonate Storm Panel ", prepared by Knezevich & Associates, Inc., dated December 14, 2000, last revision #1 dated June 7, 2001, sheets 1 through 3 of 3, signed and sealed by V. J. Knezevich, P.E.*

**B. TESTS**

1. *Test report on Large Missile Impact Test, Cyclic Wind Pressure Test and Uniform Static Air Pressure Test of Clear Polycarbonate Storm Panels, prepared by Construction Testing Corporation, Report No. 00-045 dated October 31, 2000, signed and sealed by Yamil G. Kuri, P.E.*
2. *Report on panel thickness of Clear Polycarbonate Storm Panel, prepared by Construction Testing Corporation, dated April 9, 2001, signed by George Dotzler.*
3. *Test report on Self Ignition Temperature, Rate of Burn, and Smoke Density Tests of Clear Polycarbonate Storm Panels, prepared by ETC Laboratories, Inc., Report No. ETC-01-753-10724.0 dated June 13, 2001, signed and sealed by Joseph L. Doldan, P.E.*
4. *Draft Test Report on 900 hours of the 4500 hours exposure of the Accelerated weathering of Clear Polycarbonate Storm Panels, prepared by PRI Asphalt Technologies, Notification No. PRI01041, dated June 13, 2001, by Don Portfolio.*

**C. CALCULATIONS**

1. *Anchor analysis and shutter calculation, dated December 14, 2000, Pages 1 through 38, prepared by Knezevich and Associates Inc., signed and sealed by V.J. Knezevich, P.E.*

**D. MATERIAL CERTIFICATION**

1. *Letter from GE Plastics, signed by Mr. Doug Hamilton, dated April 30, 2001, with comparable data between Lexan Sheet 9034 and Lexan resin 103.*

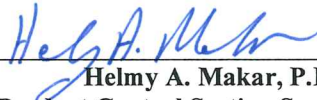
**2. EVIDENCE SUBMITTED UNDER PREVIOUS APPROVAL #04-0413.03**

**A. DRAWINGS**

1. *Drawing No. 04-342, titled " Clear Polycarbonate Storm Panel ", sheets 1 through 3 of 3, prepared by Knezevich & Associates, Inc., dated June 30, 2004, last revision #1 dated July 26, 2004, signed and sealed by V. J. Knezevich, P.E.*

**B. TESTS**

1. *None.*

  
\_\_\_\_\_  
Helmy A. Makar, P.E., M.S.  
Product Control Section Supervisor  
NOA No. 21-0112.02  
Expiration Date: 01/21/2026  
Approval Date: 05/20/2021

**Transparent Protection Systems, Inc.**

**NOTICE OF ACCEPTANCE: EVIDENCE SUBMITTED**

**C. CALCULATIONS**

1. *Anchor calculations dated June 30, 2004, 20 pages, prepared by Knezevich & Associates, Inc., signed and sealed by V. J. Knezevich, P.E.*

**D. QUALITY ASSURANCE**

1. *By Miami-Dade County Building Code Compliance Office.*

**E. MATERIAL CERTIFICATIONS**

1. *None.*

**3. EVIDENCE SUBMITTED UNDER PREVIOUS APPROVAL # 09-0423.04**

**A. DRAWINGS**

1. *Drawing No. 09-123, titled " Clear Polycarbonate Storm Panel ", sheets 1 through 4 of 4, prepared by Knezevich Associates Consulting Engineers, dated April 14, 2009, signed and sealed by V. J. Knezevich, P.E.*

**B. TESTS**

1. *Test report on Large Missile Impact Test, Cyclic Wind Pressure Test and Uniform Static Air Pressure Test of Clear Polycarbonate Storm Panels, prepared by Hurricane Test Laboratory, LLC, Report # 0239-0312-06 dated January 02, 2007, signed and sealed by Vinu J. Abraham, P.E.*
2. *Test report on Self Ignition Temperature, Rate of Burn, and Smoke Density and Mechanical Property Tests of BAYER Makrolon 3103-UV stabilized Polycarbonate/ETC 06026, prepared by ETC Laboratories, Inc., Report No. ETC-06-753-18071.0 dated June 22, 2007, signed and sealed by Joseph L. Doldan, P.E.*
3. *Letter from Engineering Express, dated August 02, 2006, signed and sealed by Frank L. Bennardo, P.E., regarding Alternative Polycarbonate Material for Clear Guard Storm Panels: CALIBRE 302V-6 Polycarbonate (Manufactured by Dow Chemical Co.).*

**C. CALCULATIONS**


1. *Anchor calculations dated April 17, 2009, 41 pages, prepared by Knezevich Associates Consulting Engineers, signed and sealed by V.J. Knezevich, P.E.*

**D. QUALITY ASSURANCE**

1. *By Miami-Dade County Building Code Compliance Office.*

**E. MATERIAL CERTIFICATION**

1. *Technical data sheet for CALIBRE 302V-6 polycarbonate resin by Dow, 3 pages.*

  
\_\_\_\_\_  
Helmy A. Makar, P.E., M.S.  
Product Control Section Supervisor  
NOA No. 21-0112.02  
Expiration Date: 01/21/2026  
Approval Date: 05/20/2021

**Transparent Protection Systems, Inc.**

**NOTICE OF ACCEPTANCE: EVIDENCE SUBMITTED**

**4. EVIDENCE SUBMITTED UNDER PREVIOUS APPROVAL # 12-0605.11**

**A. DRAWINGS**

1. *Drawing No. 09-123, titled "Clear Polycarbonate Storm Panel", sheets 1 through 4 of 4, prepared by Knezevich Associates Consulting Engineers, dated April 14, 2009, last revision #1 dated May 22, 2012, signed and sealed by V. J. Knezevich, P.E.*

**B. TESTS**

1. *None.*

**C. CALCULATIONS**

1. *None.*

**D. QUALITY ASSURANCE**

1. *By Miami-Dade County Department of Regulatory and Economic Resources.*

**E. MATERIAL CERTIFICATION**

1. *None.*

**F. STATEMENTS**

1. *Letter of compliance with FBC 2010, prepared by Knezevich Associates Consulting Engineers, dated March 30, 2012, signed and sealed by V. J. Knezevich, P.E.*

**5. EVIDENCE SUBMITTED UNDER PREVIOUS APPROVAL # 14-0826.03**

**A. DRAWINGS**

1. *Drawing No. 14-1626, titled "Clearguard Polycarbonate Storm Panels", sheets 1 through 5 of 5, prepared by Engineering Express, dated December 12, 2011, last revision dated August 04, 2014, signed and sealed by Frank L. Bennardo, P.E.*

**B. TESTS**

1. *None.*

**C. CALCULATIONS**

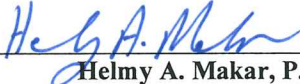
1. *Anchor analysis and shutter calculation, dated 08/04/14, Pages 1 through 48, prepared by Engineering Express, signed and sealed by Frank L. Bennardo, P.E.*

**D. QUALITY ASSURANCE**

1. *By Miami-Dade County Department of Regulatory and Economic Resources.*

**E. MATERIAL CERTIFICATION**

1. *None.*



Helmy A. Makar, P.E., M.S.  
Product Control Section Supervisor  
NOA No. 21-0112.02  
Expiration Date: 01/21/2026  
Approval Date: 05/20/2021

**Transparent Protection Systems, Inc.**

**NOTICE OF ACCEPTANCE: EVIDENCE SUBMITTED**

**6. NEW EVIDENCE SUBMITTED**

**A. DRAWINGS**

1. *Drawing No. 20-30221, titled "Clearguard Polycarbonate Storm Panels", sheets 1 through 5 of 5, prepared by Engineering Express, dated December 12, 2011, last revision dated October 19, 2020, signed and sealed by Frank L. Bennardo, P.E.*

**B. TESTS**

1. *None.*

**C. CALCULATIONS**

1. *None.*

**D. QUALITY ASSURANCE**

1. *By Miami-Dade County Department of Regulatory and Economic Resources.*

**E. MATERIAL CERTIFICATION**

1. *None.*

**F. STATEMENTS**

1. *Florida Building Code, 2020 Edition, Compliance Letter, dated October 19, 2020, signed and sealed by Frank L. Bennardo, P.E., on October 20, 2020.*



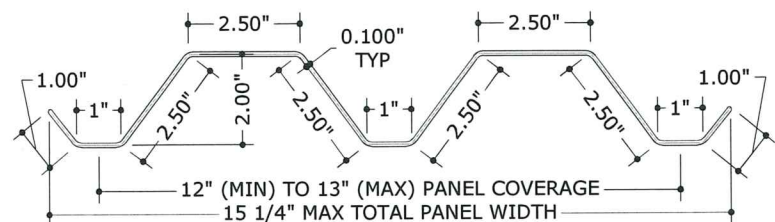
---

**Helmy A. Makar, P.E., M.S.**  
**Product Control Section Supervisor**  
**NOA No. 21-0112.02**  
**Expiration Date: 01/21/2026**  
**Approval Date: 05/20/2021**



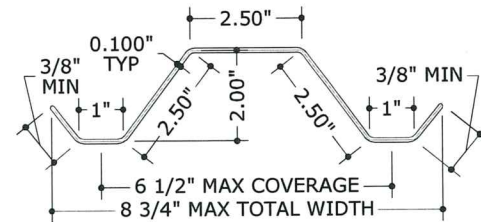
# POLYCARBONATE STORM PANELS (HVHZ)

FRANK BENNARDO, PE  
# PE 0046549 CA# 9885  
11/19/2020  
No 46549



**1 FULL PANEL PROFILE**  
3" = 1'-0" (SEE GEN NOTE 7)

MOUNT WITH FASTENERS OR STUDS AT 13" O.C. MAX



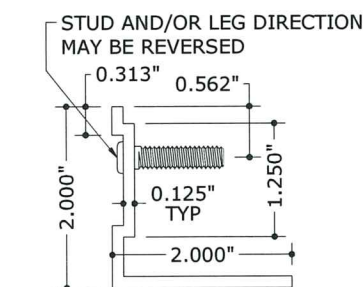
**2 HALF PANEL PROFILE**  
3" = 1'-0" (SEE GEN NOTE 7)

PRODUCT REVISED as complying with the Florida Building Code  
Acceptance No 21-0112.02  
Expiration Date 01/21/2026  
By *Hedy A. Miller*  
Miami Dade Product Control

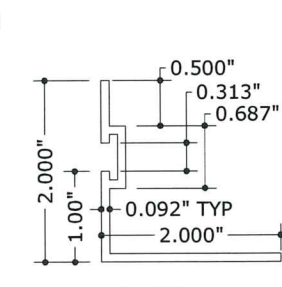
MOUNT WITH FASTENERS OR STUDS AT 6-1/2" O.C. MAX

## GENERAL NOTES:

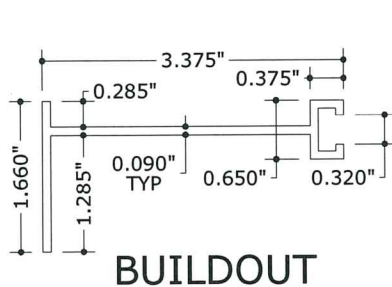
- THIS SYSTEM HAS BEEN TESTED AND EVALUATED AS A LARGE MISSILE IMPACT PROTECTIVE SYSTEM IN ACCORDANCE WITH THE REQUIREMENTS OF THE FLORIDA BUILDING CODE SEVENTH EDITION (2020) PER TAS 201, 202, & 203 TEST PROTOCOLS. PANELS ARE APPROVED FOR USE THROUGHOUT THE STATE OF FLORIDA, INCLUDING THE HIGH VELOCITY HURRICANE ZONE (HVHZ) COMPRISED OF MIAMI-DADE & BROWARD COUNTIES.
  - NO 33-1/3% INCREASE IN ALLOWABLE STRESS HAS BEEN USED IN THE DESIGN OF THIS PRODUCT.
  - POSITIVE AND NEGATIVE DESIGN PRESSURES CALCULATED FOR USE WITH THIS SYSTEM SHALL BE DETERMINED BY OTHERS ON A JOB-SPECIFIC BASIS IN ACCORDANCE WITH THE GOVERNING CODE. SITE-SPECIFIC PRESSURE REQUIREMENTS AS DETERMINED IN ACCORDANCE WITH ASCE 7 AND CHAPTER 1609 OF THE FLORIDA BUILDING CODE SEVENTH EDITION (2020) SHALL BE LESS THAN OR EQUAL TO THE POSITIVE OR NEGATIVE DESIGN PRESSURE CAPACITY VALUES LISTED HEREIN FOR ANY ASSEMBLY AS SHOWN.
  - DESIGN PRESSURES NOTED HEREIN ARE BASED ON MAXIMUM TESTED PRESSURES DIVIDED BY A 1.5 SAFETY FACTOR.
  - THE SYSTEM DETAILED HEREIN IS GENERIC AND DOES NOT PROVIDE INFORMATION FOR A SPECIFIC SITE. IF SITE CONDITIONS DEVIATE FROM THE CONDITIONS DETAILED HEREIN, A LICENSED ENGINEER OR REGISTERED ARCHITECT SHALL PREPARE SITE SPECIFIC DOCUMENTS TO BE USED IN CONJUNCTION WITH THIS DOCUMENT.
  - THE ADEQUACY OF THE EXISTING STRUCTURE TO WITHSTAND SUPERIMPOSED LOADS IS OUTSIDE THE SCOPE OF THIS CERTIFICATION AND SHALL BE VERIFIED BY OTHERS.
  - CLEAR POLYCARBONATE STORM PANELS (FULL, HALF, & DOUBLE-WIDE) MAY VARY IN "COVERAGE" WIDTH UP TO THE RESPECTIVE MAXIMA SHOWN HEREIN, PROVIDED THAT THE PANEL PROFILE HEIGHT BE MAINTAINED. PANELS SHALL BE MOUNTED WITH FASTENERS OR STUDS AT MAXIMUM SPACING SHOWN FOR EACH PROFILE.
  - ALL POLYCARBONATE PANELS SHALL BE MANUFACTURED BY TRANSPARENT PROTECTION SYSTEMS, Inc.
  - THIS PRODUCT APPROVAL IS FOR THE USE OF CLEAR POLYCARBONATE PANELS ONLY. ALL POLYCARBONATE PANELS SHALL BE EXTRUDED WITH THICKNESS  $t=0.100"$  ( $\pm 0.010"$ ) AND SHALL BE MANUFACTURED FROM 100% SYNTHETIC THERMOPLASTIC POLYMER RESIN (UV STABILIZED). ANY PLASTIC MATERIAL TO BE USED IN THE HVHZ MUST DEMONSTRATE COMPLIANCE WITH SECTION 2612 OF THE BUILDING CODE SPECIFIED ABOVE. TYPICAL TENSILE STRENGTH  $F_y=8.908$  KSI, FLEXURAL STRENGTH  $F_{by}=12.90$  KSI, & FLEXURAL MODULUS IS 328.7 KSI.
  - ALL ALUMINUM EXTRUSIONS SHALL BE 6063-T6 ALUMINUM ALLOY, U.N.O.
  - PANELS SHALL BE PERMANENTLY LABELED WITH A MINIMUM OF ONE LABEL PER PANEL CONTAINING THE FOLLOWING:  
TRANSPARENT PROTECTION SYSTEMS, INC.  
WEST PALM BEACH, FLORIDA  
MIAMI-DADE COUNTY PRODUCT APPROVED
  - STORM PANELS HAVE BEEN DESIGNED AND TESTED TO THE MAXIMUM SPANS AND CORRESPONDING LOADS SHOWN HEREIN. REFERENCE CONSTRUCTION TESTING CORPORATION (CTC OF MIAMI, FL) TEST REPORTS #04-009-FE-FBC & #04-009-LE-FBC, AS WELL AS HURRICANE TEST LAB (HTL OF RIVIERA BEACH, FL) TEST REPORTS #0239-0107-05, #0239-1013-07, & #0239-0312-06.
  - TOP & BOTTOM MOUNTING SECTIONS MAY BE INTERCHANGED AS FIELD CONDITIONS DICTATE. PANELS MAY BE MOUNTED VERTICALLY OR HORIZONTALLY AS APPLICABLE.
  - USE OF KEYHOLE WASHERS IS OPTIONAL IN CONJUNCTION WITH ANY MOUNTING CONDITION. HOLES MAY BE FIELD DRILLED IN PANELS AT  $\varnothing 3/8"$  (OR  $\varnothing 5/8"$  WITH KEYHOLE WASHER) WITH ANY FASTENER TYPE. WASHERED WINGNUTS SHALL HAVE 0.865" MINIMUM WASHER DIAMETER.
  - ALL BOLTS & WASHERS SHALL BE ZINC COATED STEEL, GALVANIZED STEEL, OR STAINLESS STEEL WITH A MINIMUM TENSILE YIELD STRENGTH OF 60 KSI.
- \*NOTE: FOR ALTERNATE ARCH TOP INSTALLATIONS, THE TOP TRACK OR U-HEADER SHALL BE CUT INTO 6" MINIMUM ADJACENT SEGMENTS. EACH SEGMENT SHALL HAVE ANCHORS SPACED PER THE ANCHOR SCHEDULE, WITH A MINIMUM OF (2) ANCHORS PER SEGMENT. ANCHORS SHALL BE 1-1/2" MIN FROM ENDS OF EACH SEGMENT AND SPACED 3" MINIMUM FROM ADJACENT ANCHORS. FOR STUDDED TRACKS ONLY, THERE SHALL BE A MINIMUM OF (1) STUD PER SEGMENT FASTENED TO THE STORM PANEL. STUDS SHALL BE LOCATED 2" MINIMUM FROM ENDS OF EACH SEGMENT.



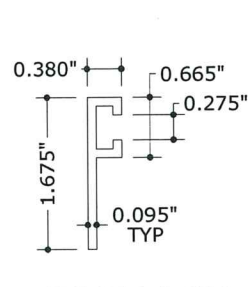
**3 STUD ANGLE**  
6" = 1'-0"



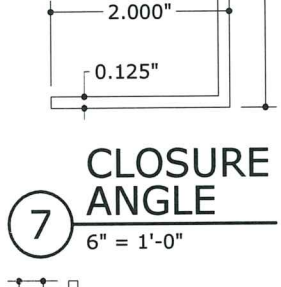
**4 REVERSE 'F' ANGLE**  
6" = 1'-0"



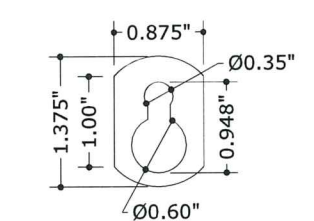
**5 BUILDOUT 'F' TRACK**  
6" = 1'-0"



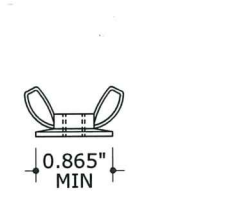
**6 'F' TRACK**  
6" = 1'-0"



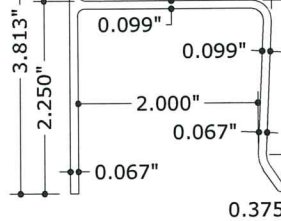
**7 CLOSURE ANGLE**  
6" = 1'-0"



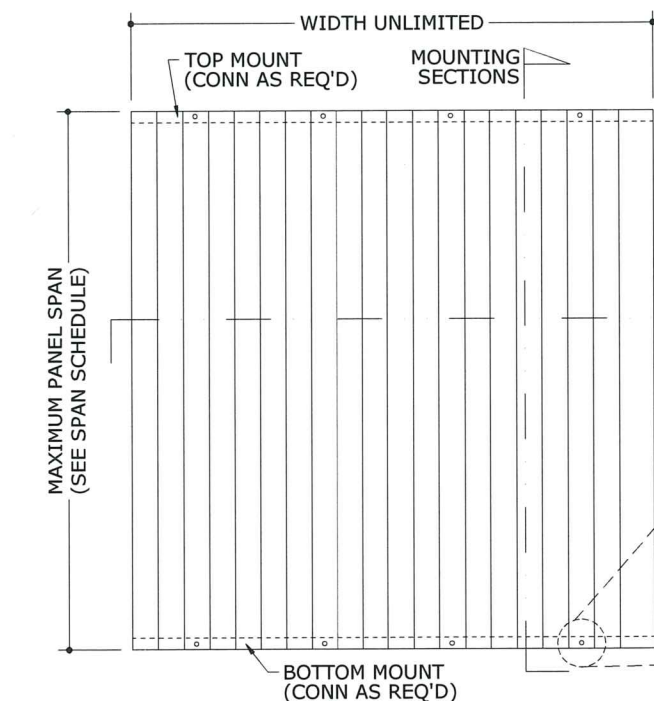
**8 KEYHOLE WASHER**  
6" = 1'-0"



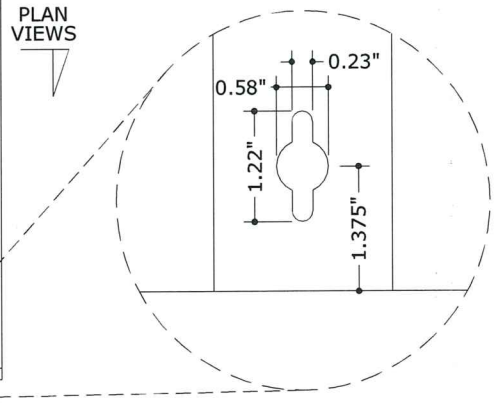
**9 WASHERED WINGNUT**  
6" = 1'-0"



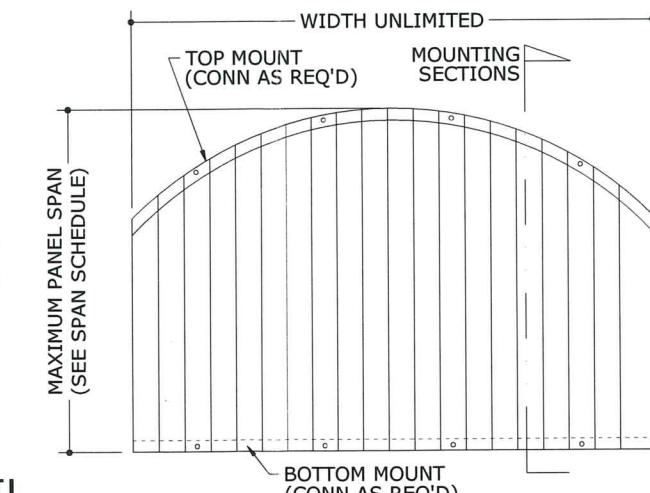
**10 'H' HEADER**  
6" = 1'-0"



**1 TYPICAL ELEVATION**  
1 N.T.S.



**2 KEYHOLE DETAIL**  
1 N.T.S. ALT: FIELD DRILL  $\varnothing 3/8"$  HOLE (OR  $\varnothing 5/8"$  HOLE W/ KEYHOLE WASHER)



**3 ALT. ARCH TOP\***  
1 N.T.S.

VISIT [ECALC.IO/30221](http://ECALC.IO/30221)

FOR SITE SPECIFIC DEVIATIONS & MORE INFORMATION ABOUT THIS DOCUMENT OR SCAN THIS QR CODE  
VISIT [ENGINEERINGEXPRESS.COM/STORE](http://ENGINEERINGEXPRESS.COM/STORE) FOR ADDITIONAL PLANS, REPORTS & RESOURCES



Transparent Protection Systems, Inc.  
633 DUNKSFERRY ROAD  
BENSALEM, PA 01920

CLEARGUARD POLYCARBONATE STORM PANELS FOR USE WITHIN AND OUTSIDE THE HVHZ MIAMI-DADE NOTICE OF ACCEPTANCE

REMARKS	DATE	DRWN	CHKD
2010 UPDATE (F6416.1)	12-12-11	EFT	KL
INT. ISSUE FOR NOA	08-04-14	CSL	TSB
2020 FBC	10/19/20	CCB	RWN

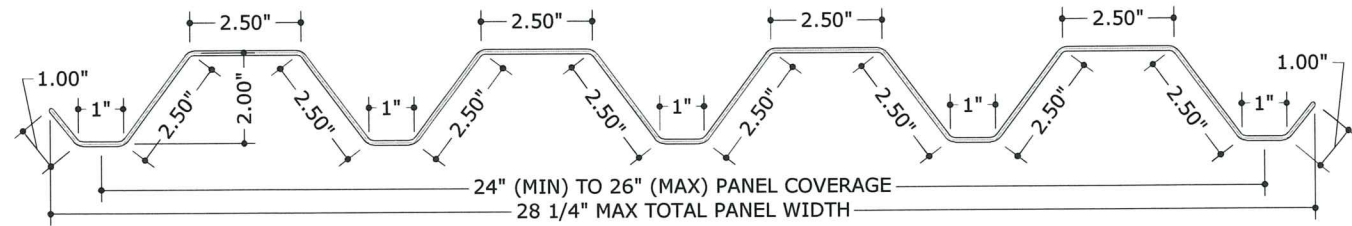
20-30221

SCALE: -  
PAGE DESCRIPTION:

1

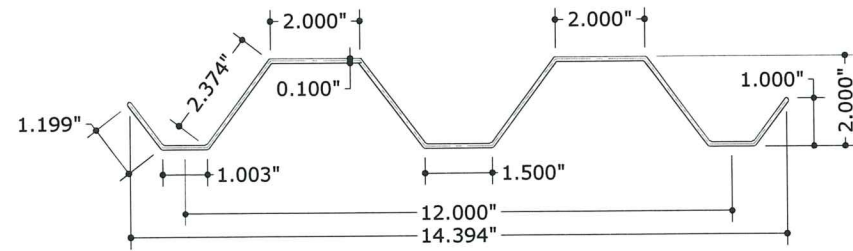
C:\Users\rickn\Engineering\Express\Production - Documents\Projects\20-30221 - NOA 14-0826.03 - ClearGuard Polycarb Storm Panels\WP\2020 FBC\40 - 20-30221b - NOA - DWG.dwg

11/19/2020 - 11:35am rickn



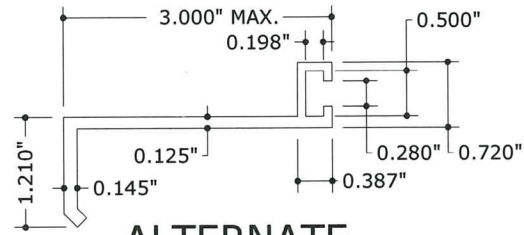
**11** "CLEARMAX™" DOUBLE-WIDE PANEL PROFILE  
3" = 1'-0" (SEE GEN NOTE 7)

MOUNT WITH FASTENERS OR STUDS AT 13" O.C. MAX

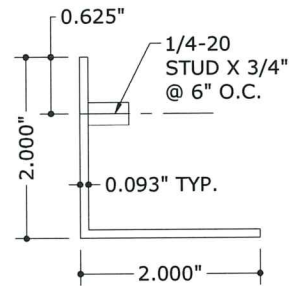


**12** ALT. FULL PANEL PROFILE  
N.T.S. (SEE GEN NOTE 7)

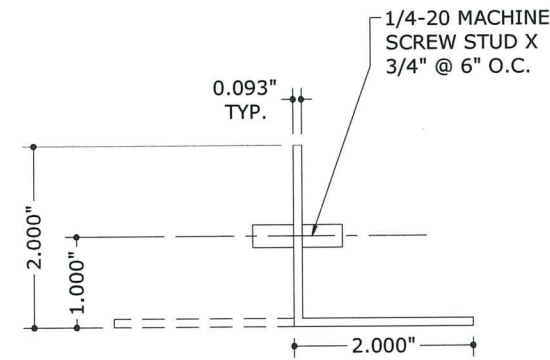
MOUNT WITH FASTENERS OR STUDS AT 13" O.C. MAX



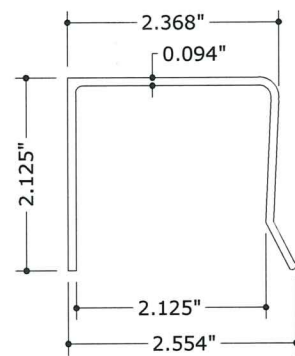
**13** ALTERNATE B.O. 'F' TRACK  
6" = 1'-0" 6063-T6



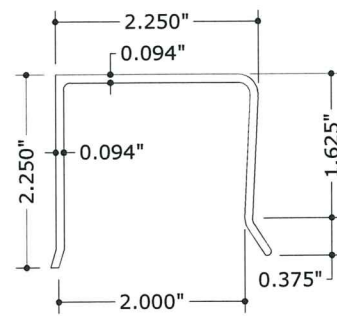
**14** ALTERNATE STUD ANGLE  
6" = 1'-0" 6063-T6



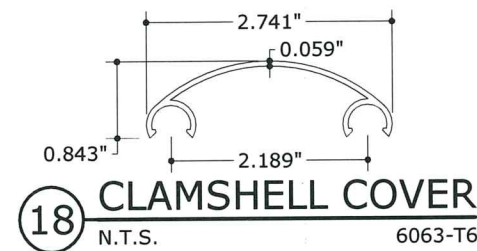
**15** STUDDED ANGLE  
6" = 1'-0" 6063-T6



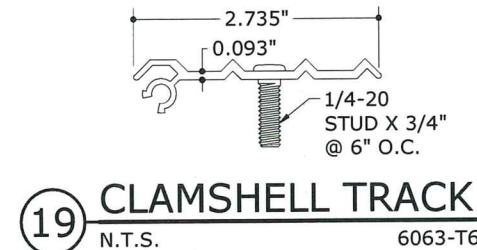
**16** U-HEADER  
N.T.S. 6063-T6



**17** ALTERNATE U-HEADER  
N.T.S. 6063-T6



**18** CLAMSHELL COVER  
N.T.S. 6063-T6



**19** CLAMSHELL TRACK  
N.T.S. 6063-T6

PRODUCT REVISED as complying with the Florida Building Code  
Acceptance No 21-0112.02  
Expiration Date 01/21/2026  
By *Hedy A. Melin*  
Miami Dade Product Control

FRANK BENNARDO, PE  
# PE 0046549 CA# 9885

11/19/2020

ENGINEERING EXPRESS  
CORPORATE OFFICE: SUITE 106  
DEERFIELD BEACH, FL 33442  
(954) 354-0660 | (866) 396-9999  
TEAM@ENGINEERINGEXPRESS.COM  
ENGINEERINGEXPRESS.COM

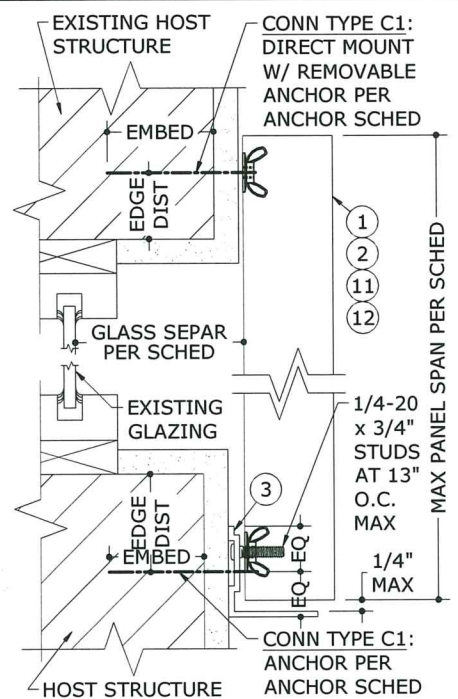
Transparent Protection Systems, Inc.  
633 DUNKSFERRY ROAD  
BENSALEM, PA 01920  
CLEARGUARD POLYCARBONATE STORM PANELS  
FOR USE WITHIN AND OUTSIDE THE HVHZ  
MIAMI-DADE NOTICE OF ACCEPTANCE

REMARKS	DRWN	CHKD	DATE
2010 UPDATE (FL6416.1)	EFT	KL	12-12-11
INT. ISSUE FOR NOA	CSL	TSB	08-04-14
2020 FBC	CCB	RWN	10/19/20

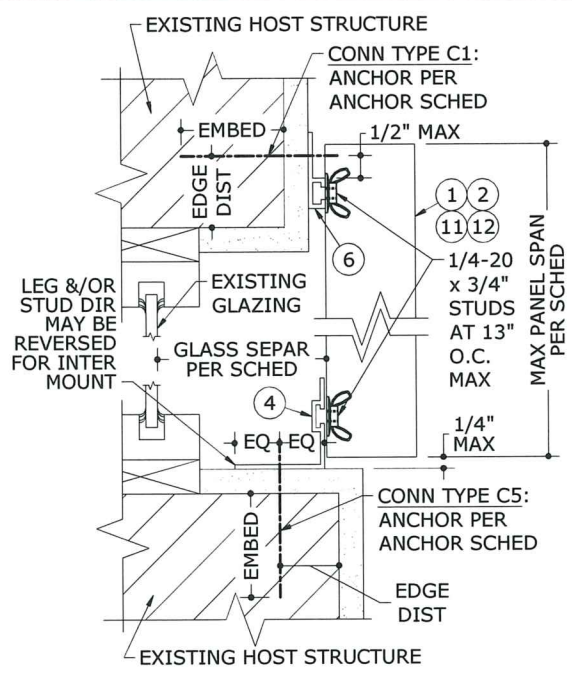
20-30221

SCALE: -  
PAGE DESCRIPTION:

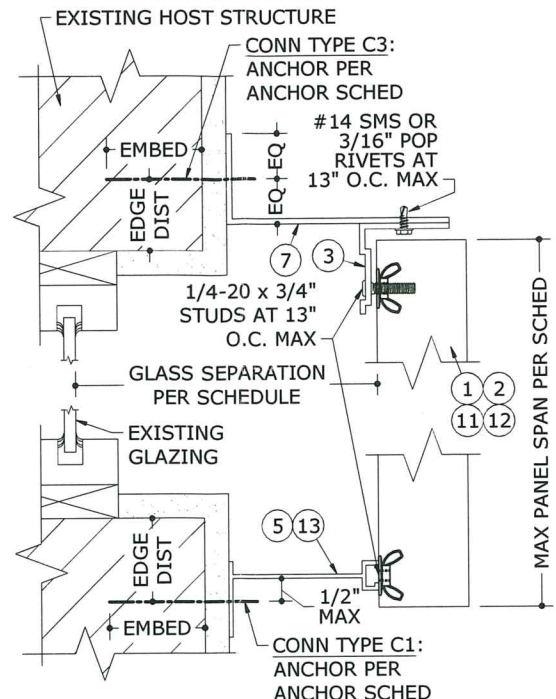
C:\Users\rickn\Engineering\Express\Production - Documents\Projects\20-30221 - NOA - 14-0826.03 - ClearGuard Polycarb Storm Panels\WP2020\FBC40 - 20-30221b - NOA - DWG.dwg  
11/19/2020 - 11:35am rickn



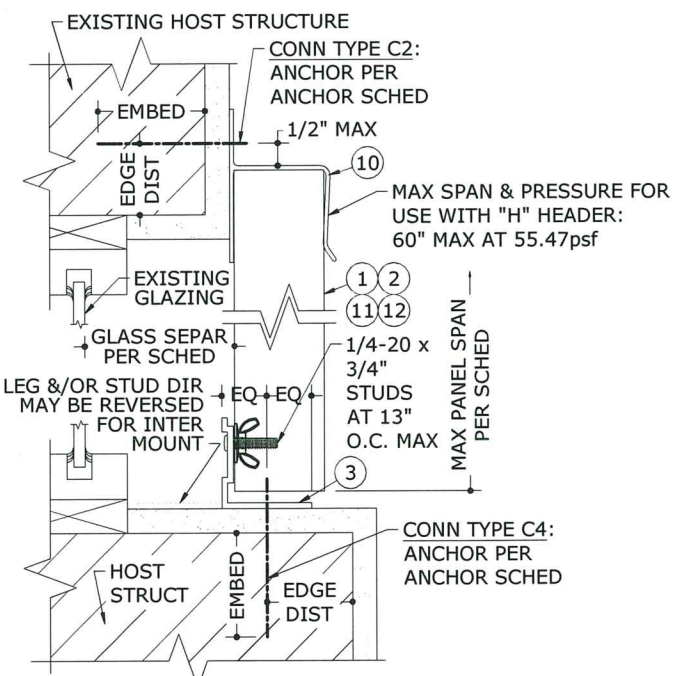
**1 MOUNTING SECTION**  
3" = 1'-0" VERT SECTION



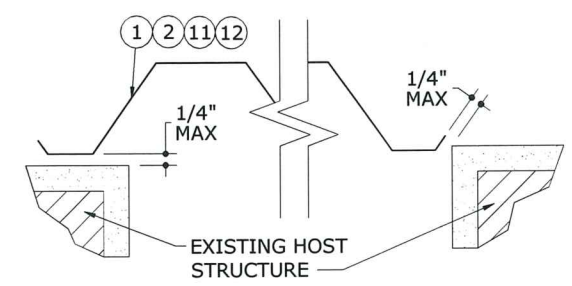
**2 MOUNTING SECTION**  
3" = 1'-0" VERT SECTION



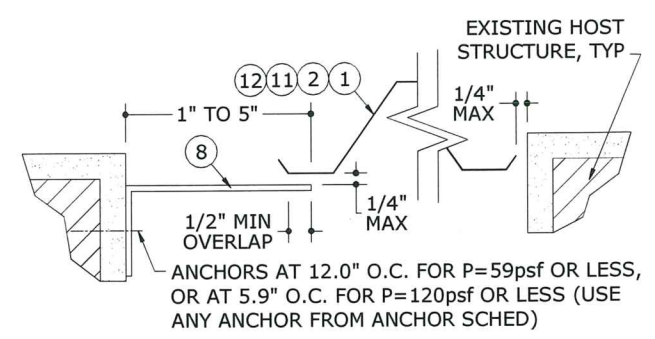
**3 MOUNTING SECTION**  
3" = 1'-0" VERT SECTION



**4 MOUNTING SECTION**  
3" = 1'-0" VERT SECTION



**7 WALL MOUNT CLOSURE**  
3" = 1'-0" PLAN VIEW

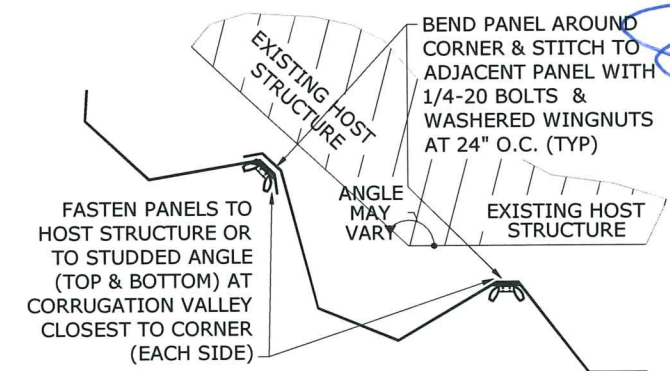


**8 TRAP MOUNT CLOSURE**  
3" = 1'-0" PLAN VIEW

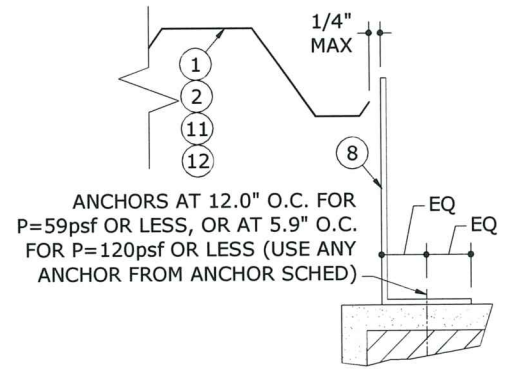
**PRODUCT REVISED**  
as complying with the Florida Building Code  
Acceptance No 21-0112.02  
Expiration Date 01/21/2026  
By *Hedy A. Mahon*  
Miami Data Product Control

**MAXIMUM PANEL SPAN SCHEDULE (POSITIVE CONN.)**

LOAD (psf)	MAX SPAN (ft)
±25	6'-5"
±30	6'-2"
±32	6'-1"
±35	5'-11"
±40	5'-9"
±45	5'-7"
±50	5'-5"
±55	5'-3"
±60	5'-2"
±65	5'-1"
±70	5'-0"
±75	4'-10"
±80	4'-9"
±90	4'-7"
±100	4'-4"
±110	3'-11"
±120	3'-7"

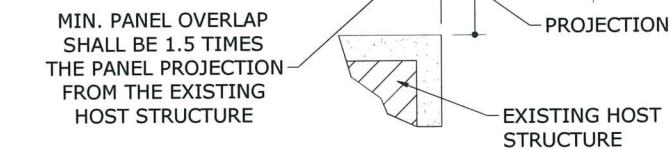


**5 CORNER CLOSURE**  
3" = 1'-0" PLAN VIEW



**6 BUILD-OUT CLOSURE**  
3" = 1'-0" PLAN VIEW

NOTE: DETAIL 9/3 MAY BE USED AS AN ALTERNATE TO CLOSURE DETAILS 7/3 AND 6/3.



**9 PANEL OVERLAP**  
3" = 1'-0" PLAN VIEW

**MAXIMUM SPAN SCHEDULE NOTES:**

1. SPANS SHOWN IN "MAX PANEL SPAN SCHEDULE" ABOVE ARE MAXIMUM ALLOWABLE SPANS AT EACH RESPECTIVE DESIGN PRESSURE.
2. THIS SCHEDULE MAY BE USED TO DETERMINE MAXIMUM ALLOWABLE SPANS FOR PANELS INSTALLED USING ANY COMBINATION OF MOUNTING EXTRUSIONS INVOLVING A POSITIVE CONNECTION - I.E. ALL INSTALLATIONS WHICH DO NOT INCLUDE AN "H" OR "U" HEADER.
3. WHERE THE "H" HEADER IS USED, THE MAXIMUM ALLOWABLE SPAN IS 5'-0" (60") AND THE MAXIMUM ALLOWABLE PRESSURE IS 55.47psf.
4. WHERE "U" HEADER IS USED, THE MAXIMUM ALLOWABLE SPAN IS 4'-4" (52") AND THE MAXIMUM ALLOWABLE PRESSURE IS +78/-80 PSF.
5. TABLE ABOVE IS VALID FOR PANELS MOUNTED HORIZONTALLY OR VERTICALLY. SPAN DIRECTION IS ALWAYS PERPENDICULAR TO LINE OF ANCHORAGE.

FRANK BENNARDO, PE  
#PE 0046549 CA# 9885

11/19/2020

**ENGINEERING EXPRESS**  
CORPORATE OFFICE  
160 SW 12th AVE, SUITE 106  
DEERFIELD BEACH, FL 33442  
(954) 354-0660 | (866) 396-9999  
TEAM@ENGINEERINGEXPRESS.COM  
ENGINEERINGEXPRESS.COM

**TPS** Transparent Protection Systems, Inc.  
633 DUNKSFERRY ROAD  
BENSALEM, PA 01920

CLEARGUARD POLYCARBONATE STORM PANELS  
FOR USE WITHIN AND OUTSIDE THE HVHZ  
MIAMI-DADE NOTICE OF ACCEPTANCE

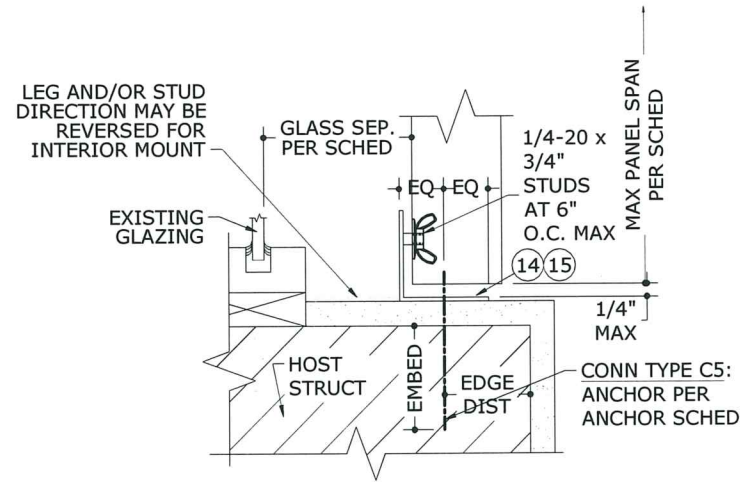
REMARKS	DRWN	CHKD	DATE
2010 UPDATE (FL6416.1)	EFT	KL	12-12-11
INT. ISSUE FOR NOA	CSJ	TSB	08-04-14
2020 FBC	CCB	RWN	10/19/20

20-30221

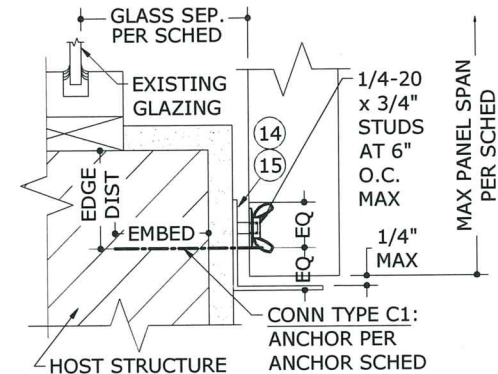
SCALE:  
PAGE DESCRIPTION:

3

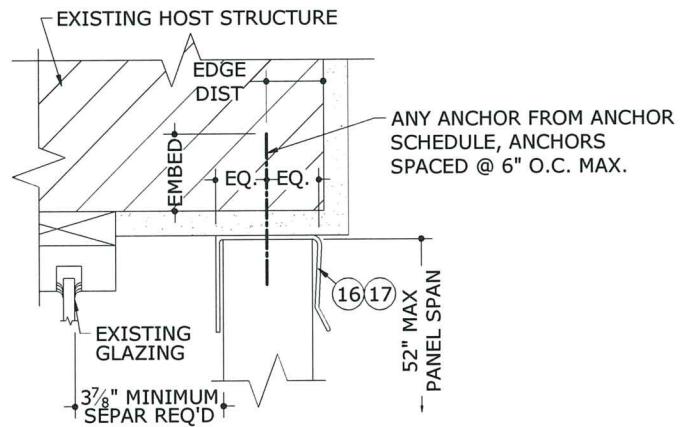




**1** MOUNTING SECTION  
 4 3" = 1'-0" VERT SECTION

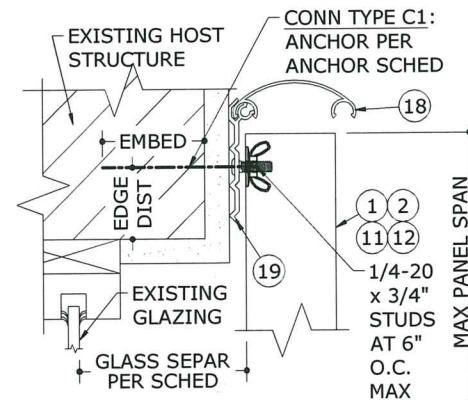


**2** MOUNTING SECTION  
 4 3" = 1'-0" VERT SECTION



NOTE: MAXIMUM SPAN AND PRESSURE FOR USE WITH 'U' HEADERS: 52" MAX PANEL SPAN, +78/-80 PSF MAX DESIGN PRESSURE

**3** MOUNTING SECTION  
 4 N.T.S. VERT SECTION



**4** MOUNTING SECTION  
 4 N.T.S. VERT SECTION

PRODUCT REVISED  
 as complying with the Florida  
 Building Code  
 Acceptance No 21-0112.02  
 Expiration Date 01/21/2026  
 By *Hely A. M...*  
 Miami Date Product Control

FRANK BENNARDO, PE  
 #PE 0046549, CA# 9885

11/19/2020

ENGINEERING EXPRESS  
 FLORIDA ENGINEERS  
 CORPORATE OFFICE: 106  
 DEERFIELD BEACH, FL 33442  
 (954) 354-0660 | (866) 396-9999  
 TEAM@ENGINEERINGEXPRESS.COM  
 ENGINEERINGEXPRESS.COM

Transparent Protection Systems, Inc.  
 633 DUNKSFERRY ROAD  
 BENSALEM, PA 01920

CLEARGUARD POLYCARBONATE STORM PANELS  
 FOR USE WITHIN AND OUTSIDE THE HVHZ  
 MIAMI-DADE NOTICE OF ACCEPTANCE

REMARKS	DRWN	CHKD	DATE
2010 UPDATE (FL6416.1)	EFT	KL	12-12-11
INT. ISSUE FOR NOA	CSL	TSB	08-04-14
2020 FBC	CCB	RWN	10/19/20

20-30221

SCALE: -  
 PAGE DESCRIPTION:

